

Product to bundle App

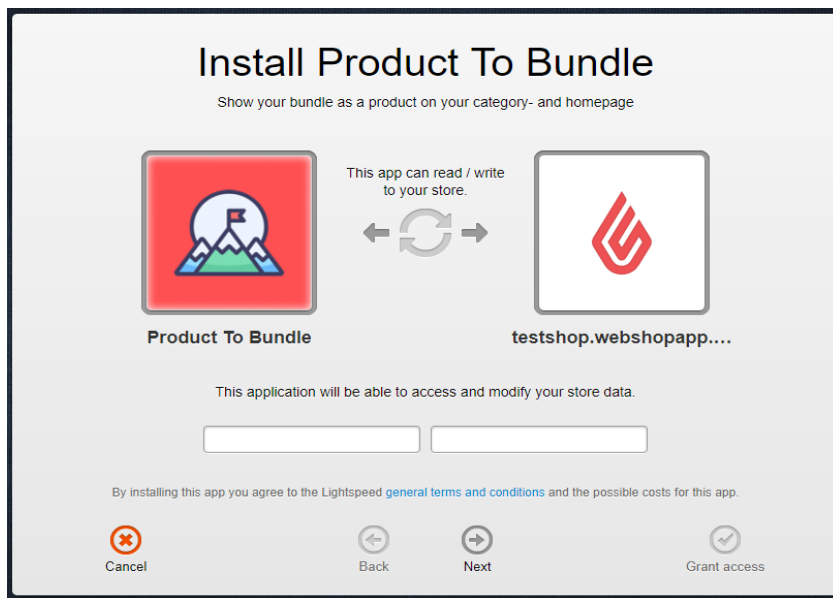


CM **DC**

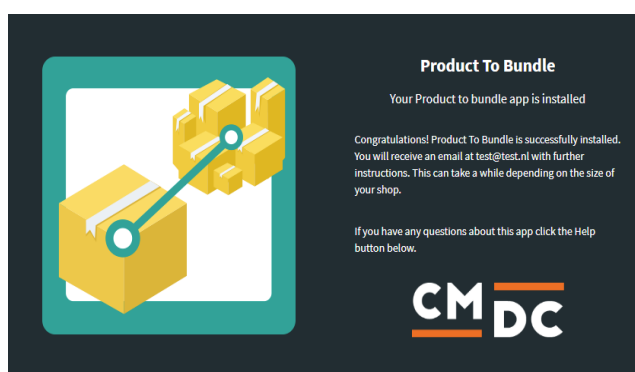
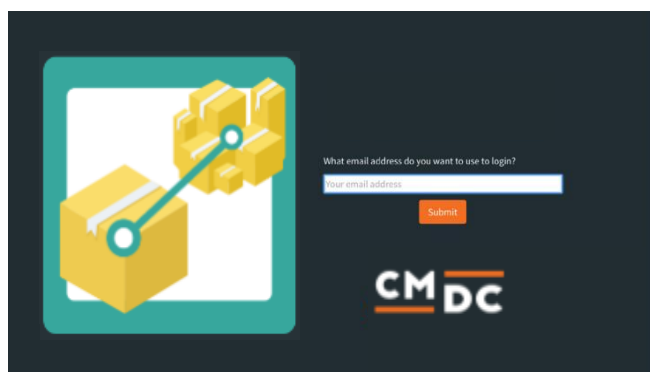
Step 1. Installing the Product to bundle APP

Search the Appstore for the app.

If you want to install the app, click on the “install” button and follow the guided installation steps.



When the app is installed, you'll be redirected to the page shown below, where you can enter the e-mail address of the user that will use the app. As soon as you've entered your email address, we'll continue the installation process in the background and we'll let you know when the installation is done. If it's your first app by CMDC, we'll also include your password in the confirmation email.



NOTE: Depending on the amount of products you have in your shop, it might take several minutes for the email to be send.

For questions you can contact us
Via: info@cmdc.eu
Or ask your question via the "Help" button.



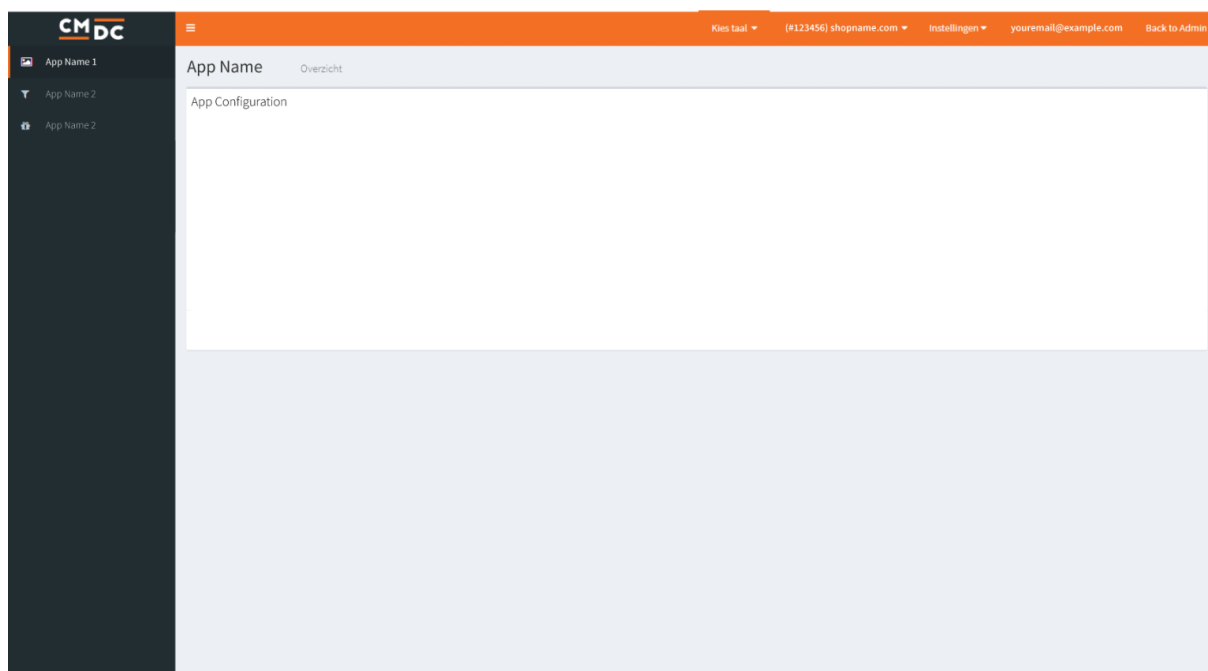
Step 2. The APP framework from CMDC

Welcome to the CMDC appframework.

CMDC has created a framework, where you'll be able to configure all the apps that are made by CMDC, which you have installed. After installing the app from Lightspeed, you'll receive an email with your password on the email address you've supplied.

Every next app of CMDC you install, while using the same email address, will be added to your menu. You'll still receive an e-mail when the installation is complete, but you'll be able to login with your same login details.

Do you own multiple shops? No problem, you can still add all the apps to the different stores using the same email address. You'll then be able to switch shop and language. By clicking on your email address you'll be able to change your password.



For questions you can contact us
Via: info@cmdc.eu
Or ask your question via the "Help" button.



Step 3. Adding and customizing the Product to bundle APP

Welcome to Product to Bundle, the app to combine product bundles into a single product within your Lightspeed store. In this manual we'll take a look at each individual step of the app. Keep in mind however that the placeholder product, main product and productbundle must be created in Lightspeed.

NOTE: The product bundle must be created and connected to a main product. Product bundles can be found at PRODUCTS > PRODUCT BUNDLES > ADD PRODUCT BUNDLE.

Placeholder

Here you'll be able to select a placeholder product, the placeholder product is how the bundle will be displayed in your webshop. Use this option to locate a product.

You can do this easily by submitting the first couple of letters in the search bar. The more characters you submit, the easier it is for the app to find a specific product. Our app is linked directly to your Lightspeed web shop. If you do however miss specific products, please wait for at least 60 minutes before contacting support.

You may select a placeholder product by clicking on it.

Main product

This option allows you to select the main product, this product will not be displayed in your bundle right away but is necessary as the actual product bundle will be connected to this specific product. Use this option to locate a product.

As is the case with the last option you may search for a product by typing out the first couple of letters.

You may select a main product by clicking on it.

Bundle

Lastly we're going to select a product bundle, this bundle will be connected to the main product in its entirety. Which in its place will be connected to the Placeholder product.

Saving and activating

Do not forget to save any made changes by clicking on the blue **Save** button. Any made changes should be visible within minutes.